



Quarterly Meeting
Department and Graduate Studies Chairs

February 3, 2009

Patrick S. Osmer
Vice Provost and Dean of the Graduate School

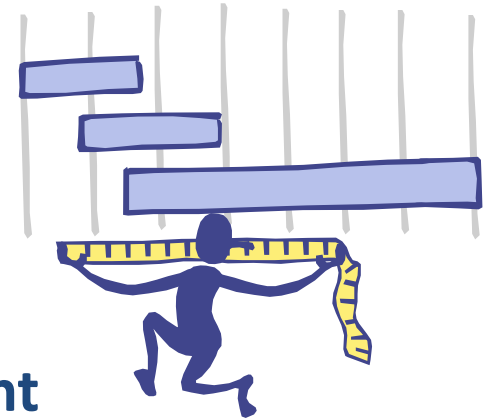


NRC Updates and Data Efforts with the Graduate School

Julie Carpenter-Hubin
Director

Institutional Research and Planning

Graduate Education Data Update



NRC Research Doctorate Assessment

Ratings publication date to be announced at

http://sites.nationalacademies.org/pga/Resdoc/PGA_044475

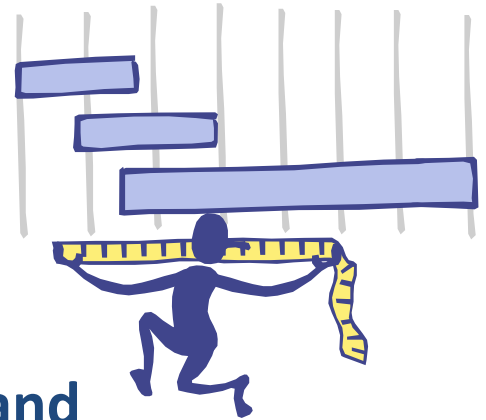
Methodology study will be published first, with ratings to be released one month following.

Association of American Universities (AAU) Graduate Education Data Collection

Ongoing collection and exchange of data by AAU schools:

- Enrollment by discipline
- Graduate student stipends
- Time to degree
- Completions
- Graduate student exit survey

Graduate Education Data Update



Graduate School/Institutional Research and Planning

Data Collection and Project Support

Ongoing collection of doctoral program data

- Enrollment
- Time to degree
- Completions
- Placements
- Council of Graduate Schools' Ph.D. Completion Project



Quarterly Meeting of Department
and Graduate Studies Chairs

Cyndi Freeman

Director

Graduate Student Recruitment
and Diversity Initiatives

Graduate Student Applications

- Of 48 SROP students from 2008, 27 have applied to Ohio State graduate programs
- 57 McNair students have applied
- 20 students from CIC institutions have applied

Strengths to Build On

- Collaboration on campus
- Summer Research Opportunities Program (SROP)
- Student development at Ohio State as well as at Historically Black Colleges and Universities and Hispanic-Serving Institutions

Barriers to Overcome

- Contact Manager
- Timeline
- Graduate student support
- Remaining agile as the economy shifts

Opportunities to Take Advantage of

- Involvement of schools, colleges, and departments
- Educational Testing Services training (for GRE)
- Nurturing campus partnerships



Quarterly Meeting of Department and Graduate Studies Chairs

Nance Hoza

Director

Graduate and Professional Admissions



Graduate and Professional Admissions

Graduate Application Data - Autumn Quarter 2008/2009

Applications	2008	2009	Difference	%Difference
Non-Resident Alien	6129	6074	-55	-0.9%
U.S.	5638	5603	-35	-0.6%
Total	11767	11677	-90	-0.8%

Completed Applications	2008	2009	Difference	%Difference
Non-Resident Alien	3698	4682	984	26.6%
U.S.	4056	4829	773	19.0%
Total	7754	9511	1759	22.7%

Admits	2008	2009	Difference	%Difference
*Non-Resident Alien	95	19	-76	-80.0%
U.S.	845	488	-357	-42.2%
Total	940	507	-433	-46.0%

*583 Recommend Admits in pending or review stage



GP Status Report Select Plan: All | None

ACCTMIS-MA ACCTMIS-PH BUSADM-MA BUSADM-PH LHR-MLHR LHR-PH MACC-MACC MBA-MB

Term: **ALL** Group by: Plan Action Ethnicity Fellowship **Get Report** [Export to PDF to print report.](#)

1 of 120 100% Find | Next Select a format Export

GRADUATE & PROFESSIONAL ADMISSIONS STATUS REPORT

2/2/2009 1:54 PM

Plan: MBA-MB

Page 1 of 120

PELLOWSHIP: GSUF - Offered (1)

208001377 AdmTest, Shereen

DOB: 1/16/1991 Ethnicity: ASIAN Email: elcrab@hotmail.com
 Gender: F Residency: Ohio Resident Citizenship Country:

Program: GBUS Term: M112 Current Program Action: Admit
 Plan: MBA-MB Campus: OOL Program Action Date: 1/23/2009
 Sub-Plan: Date Applied: 11/16/2008 Program Action Reason: GRD - Admit: Select Manually

Acceptance Fee Recd Date: Deposit Fee Recd Date: Fellowship: GSUF - Offered

Previous University: BEIJING UNIV BA - 06/06/2003 BS - 06/06/2006

Test Scores: GRE 09/01/2008 Verbl Quant 800.00 80.0% Write Anly
 GRE 09/01/2006 Verbl 630.00 90.0% Quant 700.00 72.0% Write 4.50 54.0% Anly



Graduate School Fellowship Competition

Elliot E. Slotnick
Associate Dean



Graduate School Initiatives

Patrick S. Osmer

Vice Provost and Dean of the Graduate School

On-Going Efforts

- Inquiries/initiatives by other countries about fellowship programs sponsored by home country
- Post-candidacy credit hours
- Communications: Should Graduate School newsletter be sent directly to all graduate faculty?

Graduate Council Updates Au08

- Streamlined format guidelines for dissertations and theses
- Electronic submission of master's theses
- Graduate program and curricular changes
- New or revised language regarding candidacy examinations, candidacy, and final examinations

Graduate School Initiatives

- Graduate programs to set norms for time to candidacy and time to degree based on disciplinary best practices
- Graduate programs to set target rates for degree completion based on disciplinary best practices

Graduate School Initiatives

- Task Force on Life Sciences
- Task Force on Environmental Sciences

- Charge

- Identify optimal configuration for academic and research programs
- Recommend appropriate organizational processes/arrangements to support high-quality doctoral and research efforts
- Identify overarching research themes, existing strengths, and forefront opportunities for Ohio State

- **Activities**
 - Create inventory of existing doctoral and research efforts at Ohio State
 - Identify barriers to interdisciplinary efforts
 - Invite broad participation from faculty and graduate students through working groups
- **Working Groups**
 - Research frontiers and directions
 - Inventory of existing programs
 - Best practices

Next Steps for Task Forces

- Open forums for dialog with faculty, researchers, students are now scheduled
 - E-mail announcements are about to go out
 - Your help in encouraging people to participate is requested
- Meeting with graduate program directors and department chairs is being planned
- Goal is to prepare draft concepts and options by end of Winter Quarter